

Sacramento County Community Corrections Partnership

Public Safety Realignment Plan

Discussion Topic:

Reopening of the Roger Bauman Facility (RBF)
at the Rio Cosumnes Correctional Center

August 18, 2011



Prepared by:
Sacramento County Sheriff's Department and
Criminal Justice Research Foundation
Sacramento, CA

Reopening of the Roger Bauman Facility (RBF) At the Rio Cosumnes Correctional Center

The Rio Cosumnes Correctional Center (RCCC) currently operates as the County's branch jail complex and is located off Bruceville Road approximately 24 miles south of downtown Sacramento. It is surrounded by prime agriculture land. At one end of the property is a non-controlled airport consisting of two runways, the other end contains the Sheriff's shooting range. Interstate 5 is approximately 2 miles to the west of the facility.

Rio Cosumnes is on property once owned and operated by the Federal government as a camp for pilot training during W.W.II. In the late forty's, after the war, the property was deeded to the County. The County operated the original Facility as a road camp until the first new facilities and the infrastructure were constructed in 1959. Since it was initially constructed, a number of major buildings and maintenance projects have been built that has transformed the Correctional Center into the complex it is today. Currently, RCCC contains more than 20 temporary and permanent buildings of various vintages and uses located on a 135 acre site. The structures contain a total of 366,896 square feet of custody housing, programming and support space. RCCC has a Corrections Standards Authority (CSA) rated capacity to house 1,625 male and female inmates of all security classifications. The complex contains 2,651 total bunks and has an operating capacity (90% of total bunks) for 2,385.

The arrangement of the buildings emanates from a single central fixed point, the flag pole. The Facility's building arrangement is referred to as a campus plan. That is, buildings are separated by common landscaped grounds (see RCCC site plan on page 2). Within the campus plan, there is a combination of linear style jail housing units utilizing security bar fronts, open dormitories and new generation podular, tiered housing units utilizing security glass barriers.

From the early days when the compound was predominately honor type inmates, RCCC has seen many changes. Due to changes in inmate profiles, the custody facilities have had to be modified to include many security type measures such as security fencing, tunnel fencing to and from intake/release, the addition of maximum security cells, decentralized services to curtail inmate escapes, housing control rooms with sophisticated inmate controls, and communications / electronics to aid in managing, observing and monitoring inmates at the highest level.

The individual detention facilities / housing units, types of jail bunks, and Corrections Standards Authority (CSA) rated capacity are shown in the following table.

Rio Cosumnes Correctional Center (RCCC) Number and Types of Inmate Bunks			
Facility / Housing Unit	Type of Bunks	CSA Rated Capacity	Total Bunks
Honor Facility (C, D, G, H & M)	Minimum - Dormitory	387	600
448 Unit	Medium - Dormitory	448	688
Christopher Boone Facility	Medium/Maximum - Cells	120	192
Steward Baird Facility	Medium/Maximum – Cells	148	192
Medium Security (A, B, J & K)	Medium – Dormitory	174	408
Medical Housing Unit	Minimum Dormitory	0	19
Roger Bauman Facility	Medium - Dormitory	200	275
Sandra Larsen Facility	Minimum/Med/Max – Dormitory/Cells	120	277
Total		1,625	2,651

Appendix A shows an aerial photograph of the Rio Cosumnes Correctional Center (RCCC) and identifies the location of the Roger Bauman Facility (RBF) in relation to the intake and booking building and other inmate custody housing units at the facility.

Roger Bauman Facility (RBF)

The Roger Bauman Facility (RBF) was one of the first custody housing units built at RCCC. Since its original construction, RBF has undergone several remodels and building system upgrades. The facility was built under 1963 applicable physical plant standards. The facility was originally designed as a “linear dormitory” model custody housing unit. Consequently, many of the changes to the building have been incorporated with this design configuration.

The RBF structure is laid out with four wings with circulation from a Central Control staff station. The exterior and interior wall construction is painted concrete. The building ceilings are also painted concrete. The floors are sealed concrete and the roof system is a built-up, single-ply material. The housing wings are fire sprinkled with a fire monitoring station. The housing HVAC air conditioning, lighting, plumbing and fire suppression systems have recently gone through a \$2.5 million upgrade.

About 1971, the North Wing was added to RBF with 14 cells. This design placed the Housing Control Officer in the center of the housing area. Because of the limited dayroom space, subsequent mechanical problems with the cell door control system and the intensive staffing requirements in relation to the small number of bunks located in the wing, the Sheriff’s Department no longer occupies this section of the building. The other East and West wings of the building contain multiple occupancy dormitory sleeping units containing between 5 – 8 rated beds each. The South wing has been converted to an inmate law library and can be used for other programming activities.

RBF contains a total of 19,150 square feet of functional use area that supports administration, Central Control, storage, programming, services, inmate housing / dayroom, and building circulation. The facility has multiple outdoor fenced recreation areas which inmates can access from the RBF housing units. The secure recreation yards are observable by staff stationed in an elevated observation tower overlooking the recreational yards.

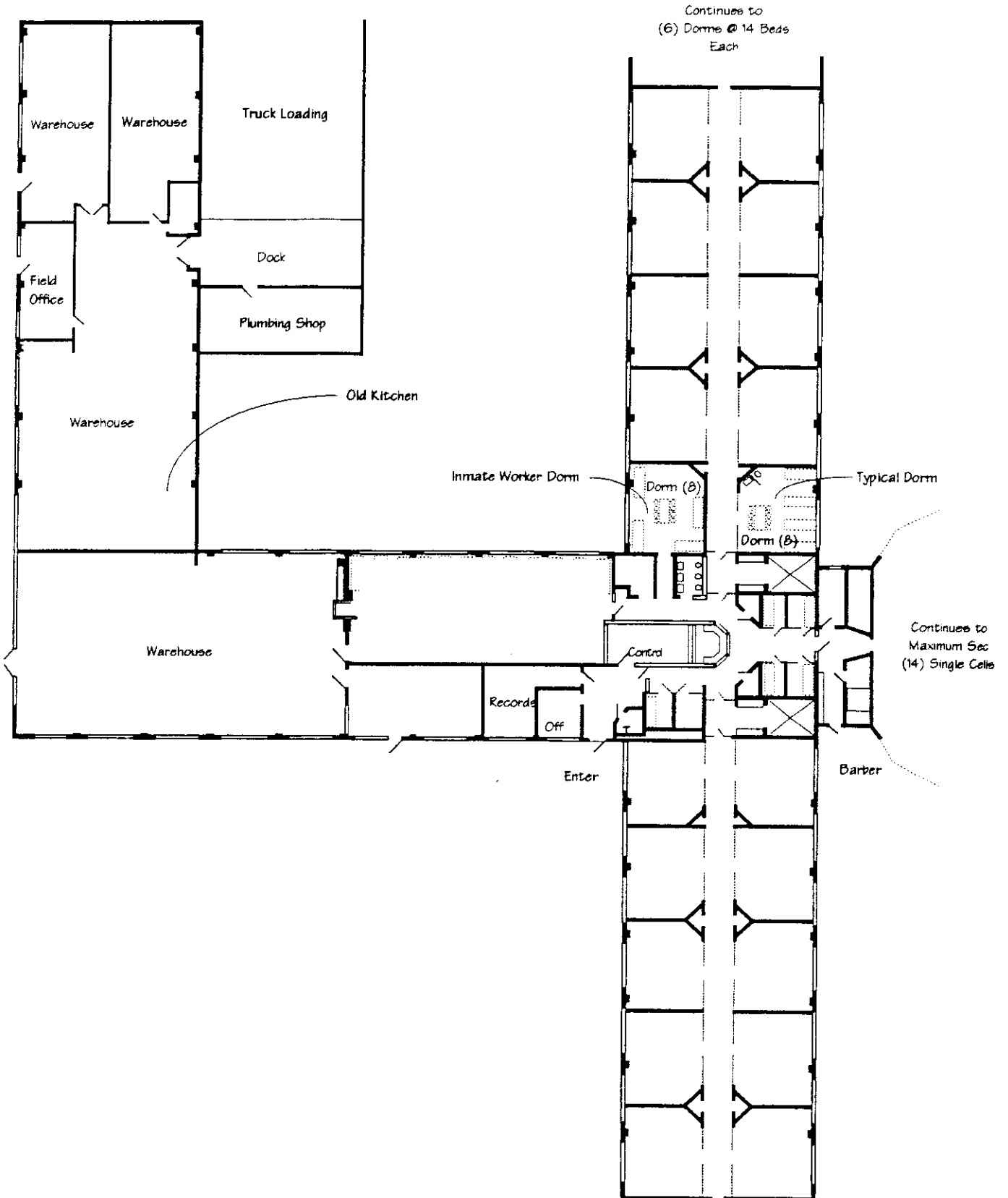
Roger Bauman Facility (RBF)		
Functional Use Area Square Footages		
Functional Use Areas	RBF	(%) Total Sq. Ft.
Administration	207	1.1%
Central Control	100	0.5%
Maintenance/Storage/Utilities	972	5.1%
Inmate Programs	1,750	9.1%
Housing/Dayrooms	15,938	83.2%
Circulation	183	1.0%
TOTAL	19,150	100.0%

CSA’s Rated Bed Capacity is 200.

Past physical plant evaluations have noted that the structure is constructed of sound materials and allows for the housing of medium and maximum security inmates. The housing control station has good observation of two adjacent cells which can be used for a suicide watch. The facility has space for medical exams and work stations for healthcare staff. The South wing of RBF is flexible in design and can accommodate space for inmate programs. The North wing of the facility, which is out of service, can easily and economically be converted to office use for inmate program and service staff who might be assigned to the unit.

The diagram on the following page shows the basic floor plan, adjacencies and overall configuration of the Roger Bauman Facility. The space layout highlights the East, West and South wings of the building with a reference indicating where the building continues to the 14 single cells which are no longer in use.

Roger Bauman Facility - RCCC



The following information provides a summary overview of the key elements associated with the proposed reopening of the Roger Bauman Facility (RBF) at the Rio Cosumnes Correctional Center as a program component in the County’s AB-109 Public Safety Realignment Plan.

**Discussion Topic:
Reopening of the Roger Bauman Facility (RBF)
At the Rio Cosumnes Correctional Center**

- 1. Facility Capacity and Housing Classifications:** The Roger Bauman Facility (RBF) is currently unoccupied and, when reopened, would have a Corrections Standards Authority (CSA) rated capacity for 200 bunks. The custody housing dormitory units are located in the Central Core, East, and West wings of the facility. The multiple occupancy small dormitories have CSA rated bed capacities that range between 5 – 8 bunks per housing unit. The dormitory housing units in these three wings can contain a total of 275 bunks.

Roger Bauman Facility (RBF) Number and Type of Inmate Bunks			
Facility Housing Wing	Type of Bunks & Housing Classification	CSA Rated Capacity	Total Bunks
RBF Central Core	Dormitory/Medium Security	5	9
RBF East Wing	Dormitory/Medium Security	115	168
RBF West Wing	Dormitory/Medium Security	80	98
Total		200	275

- 2. RBF Proposed Staffing:** The staffing to reopen the RBF facility will require two Sergeants and 29 Deputy Sheriffs. Two records officers will also be assigned to the detention facility. Five additional nurses and a half-time physician and pharmacist position will be needed to handle the medical and healthcare needs of the inmate custody population. The schedule for the custody staff is based on the Department’s three 12-hour and four 12-hour model utilizing “A” and “B” Days / Nights shift assignments covering 0630 – 1830 hours and 1830 to 0630 hours with flex days off every other week.

The Deputy Sheriff positions will cover Central Control. West and East wing housing units supplemented with roving escorts. Two Sergeants assigned to RBF will provide supervisory coverage at the facility. Two of the sworn Deputy Sheriff positions will handle inmate intake / reception and classification duties per shift five days a week. The two records officers will work day shifts with (1) assigned to the “A” side of the week shift schedule and one assigned to the “B” side of the work schedule. The five nursing staff (RNs) will be assigned (1) for four shifts and (1) will backfill the schedule for the healthcare personnel.

The RBF staff assignments by shift and day of the week are shown in the chart at the top of the following page. This staffing schedule will be followed at the facility until the point the average daily inmate population levels cannot be safely supervised and managed by facility personnel.

Sacramento County Sheriff's Department					
Roger Bauman (RBF) Proposed Staffing by Shift & Day of Week					
Schedule / Shift	Supervisor	Deputy Sheriffs			
	Sergeant	Control	West Wing	East Wing	Escort ²
"A" Days					
Sunday	1	1	1	1	2
Monday	1	1	1	1	2
Tuesday	1	1	1	1	2
Wednesday ¹	1	1	1	1	2
"A" Nights					
Saturday ¹	1	1	1	1	1
Sunday	1	1	1	1	1
Monday	1	1	1	1	1
Tuesday	1	1	1	1	1
"B" Days					
Wednesday ¹	1	1	1	1	2
Thursday	1	1	1	1	2
Friday	1	1	1	1	2
Saturday	1	1	1	1	2
"B" Nights					
Wednesday	1	1	1	1	1
Thursday	1	1	1	1	1
Friday	1	1	1	1	1
Saturday ¹	1	1	1	1	1

¹ Based on 3/12 hr & 4/12 hr Shift Model (0630 - 1830 hrs & 1830 - 0630 hrs with **RED** indicating Flex day off, every other week)

² Escorts are assigned (2) per days and (1) per nights

³ Classification Deputy (2) per shift x (5) days = (10) + RBF Deputies = (28) Deputies + (1) backfill = (29)

Records Officer (2) working day shift, (1) "A" Side a Week; (1) "B" Side of Week = (2)

RN (1) for (4) shifts; (1) Backfill = (5)

Pharmacist (0.5) Dedicated to intake needs = (0.5)

Physician (0.5) Dedicated to intake needs = (0.5)

3. **RBF Operating Budget:** The Table on the following page shows the Sheriff's Department's FY 2011 – 12 line item budget for reopening the Roger Bauman Facility (RBF) at the Rio Cosumnes Correctional Center covering the period of October 1, 2011 through June 30, 2012. Total facility costs are estimated at \$6,484,734. Other initial facility start-up cost total \$201,779. Personnel salaries and benefits for the 9-month operating period are estimated at \$4,907,144. Services and supplies for the facility, including inmate meals, clothing, and related medical / pharmacy supplies are estimated at \$1,577,590.

Sacramento County Sheriff's Department
Estimated Budget For Reopening of the Roger Bauman Facility (RBF)
October 1, 2011 to June 30, 2012

Expenditure Category	Total Cost
<i>Personnel Salaries & Benefits (9 months):</i>	
Sergeants (2)	\$ 301,467
Deputy Sheriffs (29)	\$ 3,664,484
Records Officer I (2)	\$ 181,760
Registered Nurses D/CF (5)	\$ 579,221
Physician 3 (.5)	\$ 99,192
Pharmacist (.5)	\$ 81,021
Sub-Total	\$ 4,907,144
<i>Services and Supplies:</i>	
Inmate meals	\$ 289,080
Inmate clothing and bed/dry good/notion	\$ 19,316
Officers radio system charges/training/travel/supplies	\$ 111,078
Operating Costs (custodial/laundry/cleaning supplies & printing)	\$ 48,321
Facility Maintenance (utilities & General Services charges)	\$ 384,205
Wide Area Network (WAN link with local area network)	\$ 5,215
Pharmacy drugs costs	\$ 150,900
Emergency/specialty medical care	\$ 301,800
Psychiatric care	\$ 246,525
Medical/pharmacy supplies	\$ 21,150
Sub-Total	\$ 1,577,590
Total FY 2011-12 Facility Costs \$ 6,484,734	
<i>One-Time Facility Start-Up Costs:</i>	
Badge/Hat Piece/Name Tag	\$ 6,479
Safety Equipment/Body Armor	\$ 56,017
Handgun	\$ 21,483
Radio/Electronic Supplies	\$ 86,800
Desks/Workstations/Chairs	\$ 22,500
Computers (Hardware/Software)	\$ 4,500
Phone lines/outlets for CDCR workers	\$ 2,000
Computer hook up/outlets for CDCR workers	\$ 2,000
Total One-Time Facility Start-Up Costs \$ 201,779	

(See Appendix B: Photographic Layout of the Roger Bauman Facility RBF which shows the housing unit dormitory configurations and support space at the detention facility)

Appendix A.

**Aerial Photograph of Rio Cosumnes Correctional Center
Sacramento Public Safety Realignment Plan**

FRANKLIN FIELD



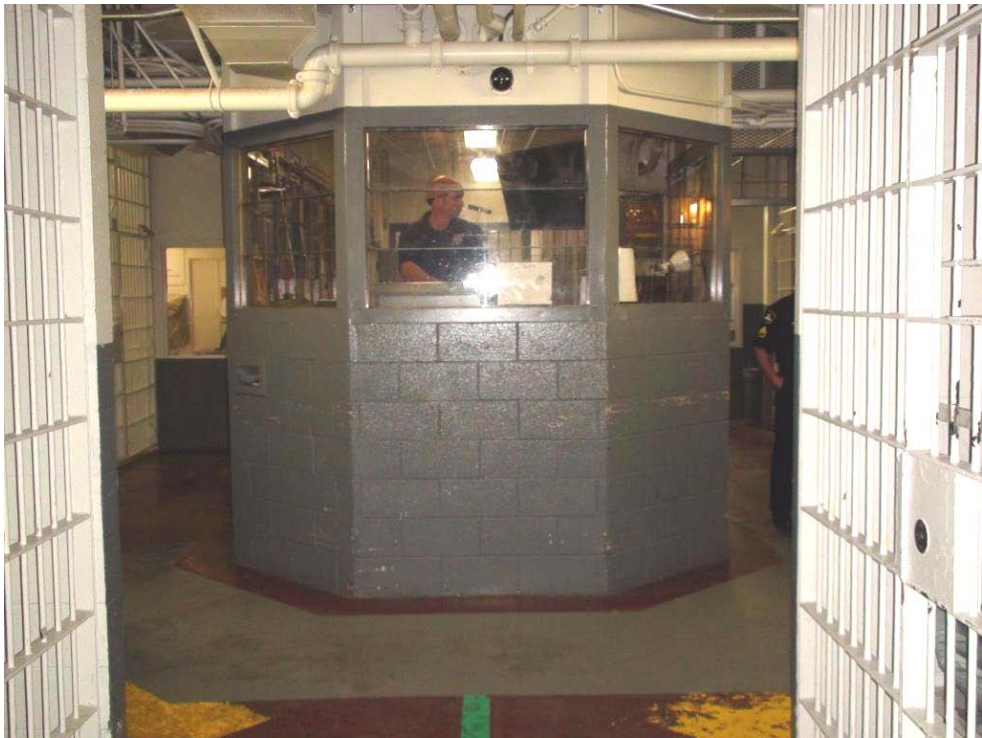
BRUCEVILLE RD.

Appendix B.

Photographic Layout of the Roger Bauman Facility (RBF) Sacramento Public Safety Realignment Plan



Roger Bauman Facility (RBF)
Housing Unit Entry



Central Control (CC) Staff Station



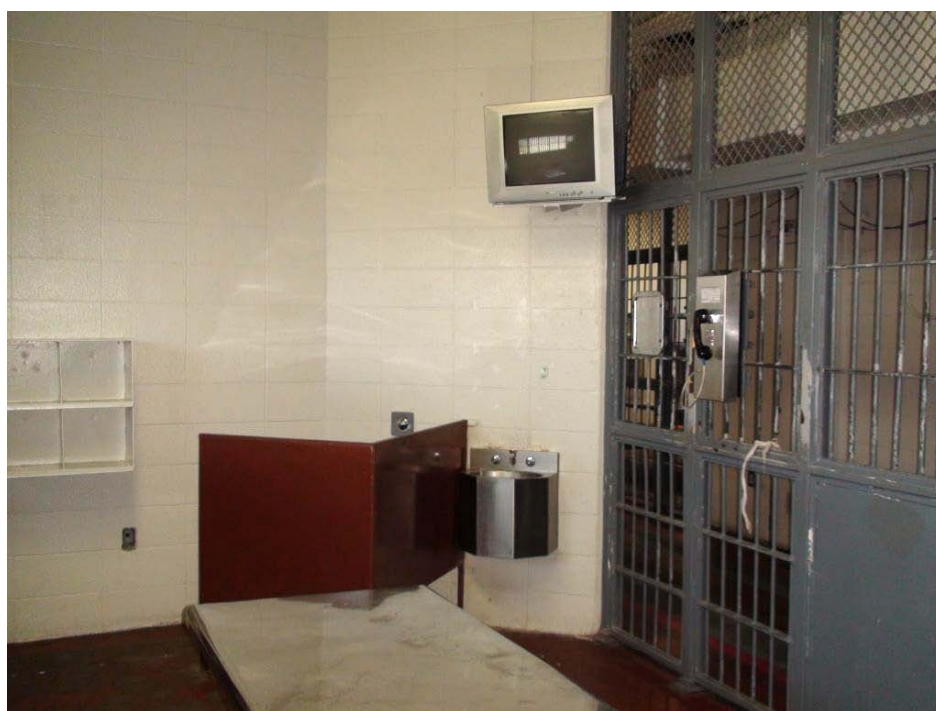
Roger Bauman Facility (RBF)
Linear Housing Unit Circulation Corridor



West Wing Linear Housing Unit Circulation Corridor



Roger Bauman Facility (RBF)
Typical Inmate Dormitory Housing Unit



Inmate Side of Typical Dormitory Housing Unit



Roger Bauman Facility (RBF)
Outdoor Recreation Area



Staff Observation Tower For Outdoor Courtyard Areas



Roger Bauman Facility (RFB)
Inmate Medical Exam Room



Inmate Law Library