



Sacramento County 2025-26 Juvenile Justice Plan

**Juvenile Justice Crime Prevention Act &
Youthful Offender Block Grant (JJCPA-YOBG)**

**FY 2025 – 2026
Consolidated Annual Plan**

Date: May 1, 2025
County Name: Sacramento
Contact Name: Jenny Ng
Telephone Number: 916-875-9843
Email Address: NgJe@Saccounty.net

Instructions:

Government Code Section 30061(b) (4) and Welfare & Institutions Code Section 1961(b) call for consolidation of the annual plans required for JJCPA and YOBG.

Please submit your most up-to-date consolidated plan.

The rest of this document is a standardized template for a consolidated county plan. If you find it helpful to use this template, please do so.

Your submission will be posted, as submitted, to the BSCC website

Please email your plan to: **Oycrcounties@chhs.ca.gov**

Table of Contents

| | |
|---|----|
| PART I – Countywide Service Needs, Priorities and Strategy | 1 |
| A. Assessment of Existing Services | 2 |
| B. Identifying and Prioritizing Focus Areas | 9 |
| C. Juvenile Justice Action Strategy..... | 12 |
| D. Comprehensive Plan Revisions | 25 |
| PART II – Juvenile Justice Crime Prevention Act (JJCPA) | 26 |
| A. Information Sharing and Data Collection | 28 |
| B. Juvenile Justice Coordinating Council..... | 29 |
| C. Funded Programs, Strategies and/or System Enhancements..... | 30 |
| PART III – Youthful Offender Block Grant (YOBG)..... | 31 |
| A. Strategy for Non-707(b) Offenders..... | 32 |
| B. Regional Agreements | 33 |
| C. Funded Programs, Placements, Services, Strategies and/or System Enhancements | 34 |

PART I – Countywide Service Needs, Priorities and Strategy

The Sacramento County Juvenile Justice System is comprised of several agencies which have direct responsibility for various functions in the system. These agencies include law enforcement, the Office of the District Attorney (District Attorney), the Office of the Public Defender (Public Defender), Sacramento County Juvenile Court (Juvenile Court) and the Probation Department (Probation).

The basic functions of these agencies as they relate to the Juvenile Justice System is as follows:

Law enforcement provides first response to emergencies and other threats to public safety. Officers investigate suspected delinquent activity and determine if juvenile suspects will be: 1) verbally warned and released; 2) referred to a community resource agency or law enforcement diversion program; 3) issued a citation; or 4) taken into custody. If an officer determines a juvenile should be taken into custody, the juvenile will be transported to the Youth Detention Facility (YDF).

When a youth is brought to the YDF by law enforcement, Probation administers a detention risk assessment to assist in determining if the juvenile can be released or should be detained at the facility and the case is referred to the District Attorney. As an alternative to incarceration, some youth may be released on home supervision or electronic monitoring, with Global Positioning System (GPS) capabilities, pending their scheduled detention hearing. Youth are diverted from detention and further involvement in the Juvenile Justice System whenever possible. During the Juvenile Court hearing process, Probation provides the following: shelter and care for each juvenile detained at the YDF; an assessment of the juvenile's criminogenic risk and needs; and a social history report for consideration post-adjudication. After the hearing process, Probation supervises youth who have been granted probation by the Juvenile Court.

The District Attorney is responsible for filing petitions based on referrals from other agencies. Probation makes referrals related to the provisions of WIC §602. The District Attorney represents the community at all subsequent Juvenile Court hearings.

The Public Defender represents youth in juvenile justice hearings resulting from WIC §602 petitions filed by the District Attorney. Alternatively, a court-appointed or private attorney may represent a juvenile in the place of a Public Defender attorney.

The Juvenile Court is responsible for hearing facts, making findings, and providing a disposition for petitions filed by the District Attorney related to WIC §602.

A. Assessment of Existing Services

The following law enforcement, probation, education, mental health, physical health, social services, drug and alcohol, and youth services resources specifically target at-risk youth, justice-involved youth, and their families.

Law Enforcement

Sacramento County law enforcement agencies provide local community services for at-risk youth. The Sacramento County Sheriff's Office Youth Services Unit operates the Sheriff's Activities League (SAL – SSDSAL.ORG), a multifaceted non-profit organization consisting of various programs partnered with multiple community organizations which collaborates with school districts across the county, working directly with at-risk youth. SAL partners with the Elk Grove Unified School District and provides the Florin Law Academy with career-centered technical curriculum with the mission of increasing diversity in the public services professions. In addition to a designated deputy assigned to the Florin Law Academy, multiple deputies serve as mentors and instructors throughout the program. SAL's partnerships target at-risk neighborhoods and allow youth to spend time with deputies playing sports and receiving educational presentations. SAL provides a platform for deputies to socialize with and mentor at-risk youth while building trust through positive interactions. SAL offers a youth-diversion program (S.H.O.C.K.) geared towards offering educational workshops, skill-building activities, and personalized support in the lives of at-risk youths. Similarly, police departments operating in the municipalities within Sacramento County, including Sacramento, Rancho Cordova, Elk Grove, Galt, and Citrus Heights, organize and oversee various Youth Services Units and Police Athletic Leagues (PALs). PAL's offer sports and activities for youth in their respective jurisdictions.

In addition to the structured programs, SAL organizes multiple events, programs, and throughout the year to engage and encourage youth to make positive life choices and be productive citizens. SAL provides opportunities for deputies and law enforcement personnel to connect with underserved youth in a positive way and build trust within the community.

The Sacramento Police Department offers the Criminal Justice Magnet Academy. It is a program designed to encourage interaction among police officers, parents, and children by providing a safe learning environment and reduce delinquency by targeting "at-risk" children. Many of the at-risk students come from single parent homes, speak English as a second language, have tremendous financial constraints, and live in gang and drug environments.

The Criminal Justice Academy is a partnership between high schools and public and private organizations that focus on providing meaningful academic and technical skills-based education relevant to the work environment high school students may encounter when they graduate. The Criminal Justice Academy offers a school within a school framework, guiding students as a group from their freshman through their senior year.

The Magnet Academy has been in existence for approximately 30 years and currently services approximately 564 students in five area local high schools; Kennedy, Johnson, McClatchy, Grant Union and Inderkum. Nearly 100% of the students who graduate from the Magnet Academy enter a college program. The Criminal Justice Academy offers SAT workshops, scholarships, college coaching, technical career hands-on learning, social interaction programs and character-leadership development programs.

The Sacramento Police Department hosts “VIP Academy Experience” tours with youth. They participate in physical training sessions, scenarios, virtual reality training systems, as well as interact with academy staff. This idea was proposed by youths during a focused group discussion with a community-based organization.

Another notable program is the “Adopt-A-Class” at local elementary schools. This is a 6-week program where students learn about stranger danger, being safe on the internet, how to use 911, and much more. All instruction is from sworn and civilian employees of the Sacramento Police Department.

Educational Services

Community Action for Responsive Education (CARE) is a Sacramento County Office of Education (SCOE) program that provides individualized education for students in grades six to ten who have fallen behind due to academic disengagement. The program aims to dramatically increase student engagement and success in a small, caring setting. CARE students receive three to four classes of instruction from one teacher in a supportive environment focusing on core academics, social-emotional strength, and study skills. SCOE provides enrichment opportunities, parenting support, mentors, tutors, and other services for CARE students on an as-needed basis. Students in the CARE Program consistently raise their GPA by 1.0 grade point per year of involvement.

Beginning in the 24/25 school year, the CARE program operates at eight (8) schools including Center High School and Wilson C. Riles Middle School (Center Joint USD), Sutter Middle School, W.E. Mitchell Middle School, and Folsom Middle School (Folsom Cordova USD), Estrellita High School (Galt USD) and Katherine Johnson Middle School (San Juan USD).

As mandated by California Education Code, the Sacramento County Board of Education established community schools to provide an alternative educational program for students from various Sacramento County school districts. Districts may refer students who have been expelled. Students can be referred due to SARB (School Attendance Review Board) recommendations, or a referral from the Sacramento County Probation Department. Parents may also collaborate with districts to jointly refer students to community schools for credit recovery or behavior reasons. Community schools provide core academics and interventions that are aligned with education standards. In addition, students receive additional support and placement, counseling, and the opportunity for career exploration and Career Technical Education (CTE) courses.

- Elinor Lincoln Hickey Jr./Sr. High School
- Nathaniel S. Colley, Sr. High School
- North Area Community School

Behavioral Health Services

Substance Use Prevention and Treatment Services

Juvenile Probation and Behavioral Health Substance Use Prevention and Treatment Services (SUPT) collaborated to establish a substance use disorder (SUD) screening, assessment, and referral process. Through this process, youth with an identified risk factor in substance use/abuse are provided a SUD screening on-site at the Sacramento County Juvenile Court building or at the Youth Detention Facility if incarcerated. Following the assessment, treatment recommendations and referrals to contracted community-based or county service providers are made by a senior mental health counselor or certified addiction specialist.

Through SUPT, youth may receive substance use services covered by Medi-Cal if eligible and if they are not otherwise covered by medical insurance that includes these services. Any youth living in Sacramento County who is experiencing substance use problems can be referred to the program or refer themselves. Services are provided based upon assessed needs and recommendations.

Group substance abuse education services are provided through rehabilitative, or skills building groups and facilitated by licensed, master's degree level, certified or unlicensed staff. Each group can accommodate up to 12 clients per session.

Assessments: Sacramento County Substance Use Prevention and Treatment is offering in person youth assessments upon request. Most of the assessments are conducted virtually. Same day phone assessment appointments are available.

Who is eligible for services?

- Individuals aged 12 and older living in Sacramento County experiencing substance use problems (some services available to 18+)
- Eligibility is based on full scope Medi-Cal and/or the lack of insurance that covers Substance Use treatment services

Groups: Groups are virtual and as needed at this time.

Mental Health Services

The Sacramento County Behavioral Health Services (BHS) provides a full array of culturally responsive and linguistically proficient mental health services for children, youth, adults, and older adults. Through a variety of county-operated and contracted providers, BHS offers prevention and early intervention, outpatient, acute, subacute, and residential care, crisis intervention and stabilization services, and inpatient psychiatric hospitalization. Behavioral Health staff are co-located with Probation staff to provide screening, assessment, referral, and case management/linkage to any youth identified by Probation and specifically those in need of intensive mental health treatment provided through a Full-Service Partnership program. In July 2023, children outpatient mental health providers implemented a direct access walk in model providing assessments and linkage to services. Any justice involved youth automatically qualifies for an assessment at a clinic. A list of programs accepting new clients is updated every Friday: [Child Provider Walk-in Hours List.pdf \(saccounty.gov\)](#)

Behavioral Health Services offer Full Service Partnerships (FSPs) which are intensive, team-based behavioral health services for youth and young adults with serious behavioral health needs, using a “whatever it takes” approach. The Family FSP serves children and youth involved with complex family system; the Juvenile Justice Diversion and Treatment Program (JJDTTP) FSP specializes in youth involved with the juvenile justice system; the Transition Age Youth (TAY) FSP focuses on young adults ages 16–25 with complex mental health and functional needs, transitioning to the independent stage of life and are often exiting foster care or justice systems; and the Turning Point Pathways FSP supports high-risk youth and TAY experiencing or at risk of homelessness. Services are field-based and include 24/7 crisis response, psychiatry, therapy, and intensive case management, with strong emphasis on family engagement and culturally responsive care. Anyone in the home can receive mental health services, if there is one person receiving services through their Medi-Cal benefit.

The full MHP Medi-Cal Provider List can be found at the following link:

<http://www.dhs.saccounty.net/BHS/Documents/MHP-MediCal-Providers/GI-MHP-Medi-Cal-Provider-List-English.pdf>

The full Prevention and Early Intervention Services and Mental Health Respite Services Provider List can be found at the following link:

<http://www.dhs.saccounty.net/BHS/Documents/MHP-MediCal-Providers/GI-PEI-and-MH-Respite-Services-Provider-List-English.pdf>

Wraparound

BHS offers the Wraparound program which provides intensive, family-centered mental health services for youth at risk of entering or stepping down from high-level placements, such as group homes, juvenile facilities, or psychiatric hospitals. Wraparound is designed to keep youth safely in their homes and communities by building on family strengths and natural supports. Specialized teams work with youth involved in child welfare, probation, and mental health systems to develop individualized plans that include therapy, crisis intervention, case management, and linkage to housing, education, and other supports. Services are culturally responsive, team-driven, and provided primarily in the community and home settings.

Community Resources

The following community resources are available in the specified areas of the County of Sacramento. Probation has provided information on these services and organizations as a reference. This is not intended to be an all-inclusive list of services available throughout the County.

Community Resources

Updated by CAU: 3/12/24

| Community Resources | Alcohol and Drug | Community Based Counseling | Family Counseling | Trauma/Mental Health | Human Trafficking | Juvenile Domestic Violence |
|--|-------------------------|-----------------------------------|--------------------------|-----------------------------|--------------------------|-----------------------------------|
| Another Choice Another Chance (ACAC) 7000 Franklin Boulevard, Suite 200, Sacramento, CA 95823 (916) 388-9418, www.acacsac.us | X | X | | | | |
| Capital Star Community Services - (916) 584-7800 www.starsinc.com/sacramento-county/ 3815 Marconi Ave., Sacramento, CA 95821 (Arden Arcade Center) 401 S Street, Sacramento, CA 95811 (Downtown Center) 3800 Watt Ave., Suite 110, Sacramento, CA 95821 - (916) 344-0249 (FIT Program) Consultation, Support, and Engagement Team (CSET) for Commercially Sexually Exploited Children (CSEC) Transition Age Youth (TAY) Program – Youth Help Network (YHN), Flexible Integrated Treatment (FIT) Program, Parent-Child Interaction Therapy (PCIT) | | X | X | X | X | |
| Chicks In Crisis 9455 East Stockton Boulevard, Elk Grove, CA 95624 (916) 896-0031, www.chicksincrisis.org | | | | | X | |
| Community Against Sexual Harm (CASH) 3101 1st Avenue Sacramento CA, 95815 (916) 856-2900, cashesacramento.org | | | | | X | |
| Foster Hope Sacramento 4144 Winding Way, CA, 95841 (916) 737-1481, www.fosterhopesac.org | | X | X | | | |
| HeartLand Child & Family Services (formerly Terkensha) 2829 Watt Avenue, Suite 200, Sacramento, CA 95821 - (916) 418-0828 811 Grand Avenue, Suite D, Sacramento, CA 95838 (916) 922-9868 6833 Stockton Blvd., Suite 485, Sacramento, CA 95823 (916) 942-9144 www.doingwhateverittakes.org | | X | X | X | | |
| La Familia Counseling Center 3301 37th Avenue, Sacramento, CA 95824 (916) 210-8773 5523 34th Street, Sacramento, CA 95820 (Main office) (916) 452-3601 www.lafcc.org | | X | X | | | X |
| My Sister's House (916) 930-0626, www.my-sisters-house.org 24/7 Confidential Help Line (Multi-lingual Help Line)(916)428-3271 | | | | | X | X |

| Community Resources Continued | Alcohol and Drug | Community Based Counseling | Family Counseling | Trauma/Mental Health | Human Trafficking | Juvenile Domestic Violence |
|--|-------------------------|-----------------------------------|--------------------------|-----------------------------|--------------------------|-----------------------------------|
| River Oak Center for Children Wraparound (WRAP), Flexible Integrated Treatment (FIT), Trauma-Focused Cognitive Behavioral Therapy (TF-CBT), Functional Family Therapy (FFT), Multi-Systemic Therapy (MST) Referral by Sacramento Access (916) 875-1055 <hr/> Juvenile Justice Diversion Treatment Program (JJDTDP) <i>(A mental health diagnosis is required to be eligible for JJDTDP. Direct referrals to be made to Supervising Probation Officer Christa Flewellyn (916) 874-2730.)</i> 9412 Big Horn Boulevard, Suite 6, Elk Grove, CA 95758 5445 Laurel Hills Drive, Sacramento, CA 95841 (916) 609-5100, www.riveroak.org | X | X | X | X | | |
| A Better You Services 2740 Fulton Ave, Suite 125, Sacramento, CA 95821 (916) 454-4242, www.abetteryouservices.com | X | | | | | |
| Stanford Sierra Youth and Families Juvenile Justice Intervention Services (JJIS) (probation referral required) Trauma-Focused Cognitive Behavioral Therapy (TF-CBT), Functional Family Therapy (FFT) <hr/> Wraparound (WRAP), Flexible Integrated Treatment (FIT) (Referral by Sacramento Access (916) 875-1055) 8912 Volunteer Lane, Sacramento, CA 95826 (916) 344-0199, www.ssvaf.org | X | X | X | X | | |
| Turning Point Community Programs 3440 Viking Drive, Suite 114, Sacramento, CA, 95827 (916) 364-8395, www.tpcp.org <hr/> Mental Health Urgent Care Clinic through Turning Point 2130 Stockton Boulevard, Building 300, Sacramento, CA 95817 (916) 520-2460, www.tpcp.org/programs/urgent-care/ | | X | X | X | | |
| Pacific Clinics 9343 Tech Center Drive, 2nd Floor, Sacramento, CA 95826 (916) 388-6400, www.pacificclinics.org | | X | X | X | | |
| UC Davis Children's Hospital: CAARE Center 3671 Business Drive, Sacramento, CA 95820 (916) 734-8396, https://health.ucdavis.edu/children/services/caare/ | | | | X | X | |
| WEAVE 1900 K Street, Sacramento, CA 95811 (916) 448-2321, www.weaveinc.org/ Support Line – (916) 920-2952 | | | | X | X | X |
| Wellspace Health 1820 J Street, Sacramento, CA 95811 5441 Florin Rd, Suite 40, Sacramento CA, 95823 2433 Marconi Ave, Sacramento, CA 95821 2425 Alhambra Blvd, Sacramento, CA 95817 (916) 737-5555, www.wellspacehealth.org | X | X | X | | | |

BLACK CHILD LEGACY COMMUNITY INCUBATOR LEADS

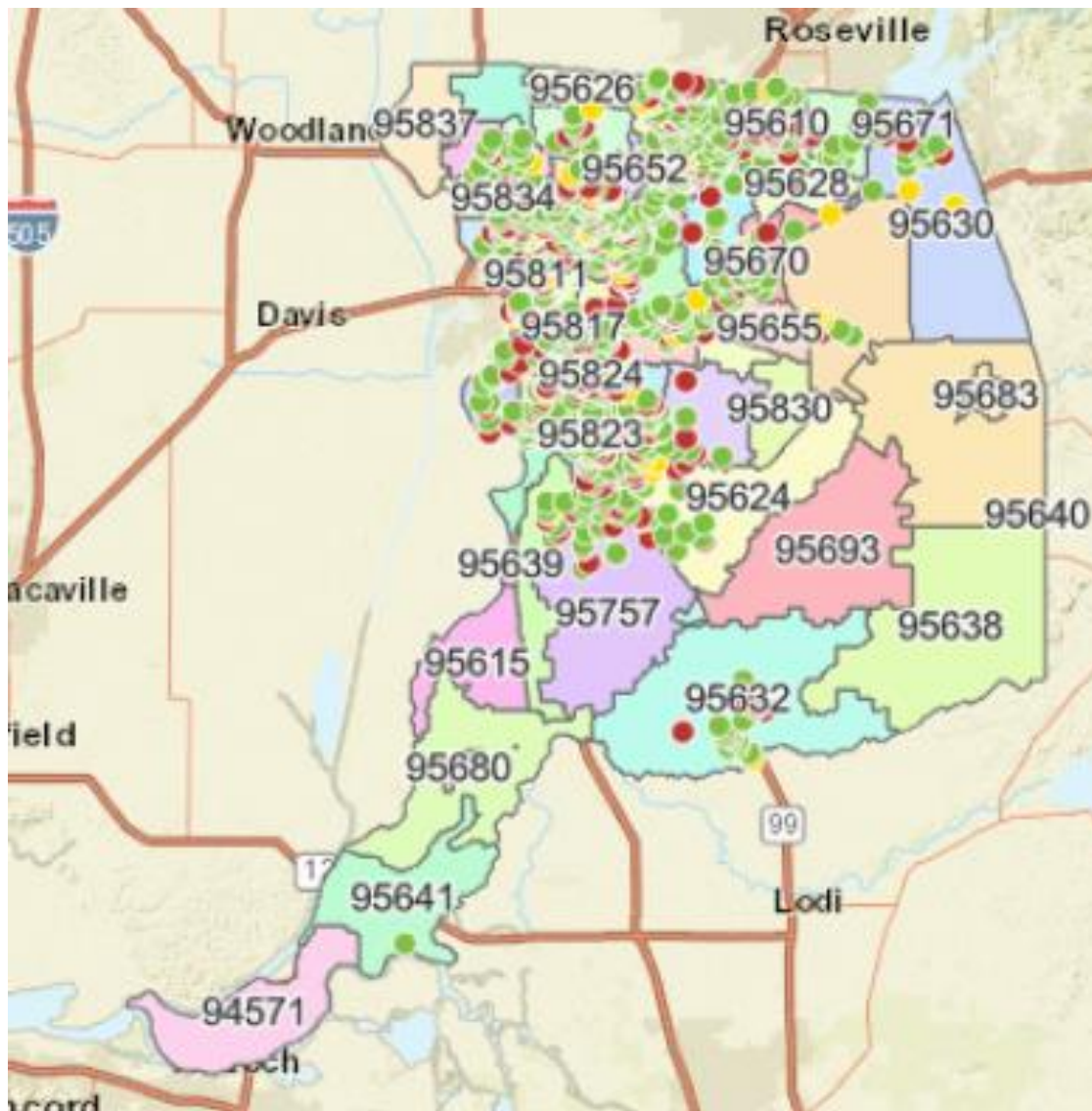
| | |
|---|--|
| Foothill Farms/North Highlands Liberty Towers/Impact Sac | 5132 Elkhorn Boulevard, Sacramento, CA 95842 (916) 900-6708 www.libertytowers.com www.impactsc.org |
| Oak Park Greater Sacramento Urban League Oak Park | 2331 Alhambra Boulevard, Suite 300, Sacramento, CA 95817 (916) 732-3699, www.gsul.org |
| Arden Arcade Mutual Assistance Network/Arden Arcade Community Center (Home visits: 95821, 95825, 95864) | 2427 Marconi Avenue Suite 101, Sacramento, CA 95821 810 Grand Avenue, Sacramento, CA 95838 (916) 514-8096 |
| Del Paso/North Sacramento Roberts Family Development Center/Greater Sacramento Urban League | 3725 Marysville Blvd., Room 203, Sacramento, CA 95838 (916) 646-6631, www.robertsfdc.com (916) 286-8687, Greater Sacramento Urban League |
| Meadowview Rose Family Creative Empowerment Center | 7000 Franklin Blvd, Suite 1000, Sacramento, CA 95823 (916)376-7916, www.RFCECenter.com |
| Fruitridge/Stockton Sacramento Building Healthy Communities | 4625 44 th Street, Sacramento, CA 95820 (916) 431-7485, www.sacbhc.com |
| Valley Hi South Sacramento Christian Center Valley Hi | 7710 Stockton Boulevard, Sacramento, CA 95823 (916) 681-6791 |

B. Identifying and Prioritizing Focus Areas

The following assessment of Sacramento County neighborhoods/areas identifies and prioritizes the zip codes facing public safety risk from juvenile crime.

Juvenile Probation Population by Residence Zip Code

The map below provides a visual representation of the number of individuals in the juvenile justice system, according to the zip code of their last known residence. This data is also shown in Table 1 and includes youth in pre-adjudication, on informal probation, on formal probation and those supported by Probation under Assembly Bill (AB) 12.



As of February 3, 2025

Table 1 below shows the number of youths on probation, as of the first day of each calendar year, categorized according to the zip code of their last known residence. This data includes youth in pre-adjudication, on informal probation, on formal probation and those supported by Probation under Extended Foster Care. The top ten (11) neighborhoods with the highest average number of youth (2021-2024) under Probation's jurisdiction are highlighted.

*Table 1

| Zip Code | Area Descriptor | 2022 | 2023 | 2024 | 2025 | Average | Change 2021-2024 |
|----------|-----------------------------|-------------|-------------|-------------|-------------|---------|------------------|
| 95823 | Parkway | 78 | 85 | 99 | 117 | 95 | 50% |
| 95838 | Del Paso Heights | 70 | 61 | 67 | 81 | 70 | 16% |
| 95670 | Rancho Cordova / Gold River | 42 | 39 | 57 | 59 | 49 | 40% |
| 95833 | South Natomas | 32 | 44 | 54 | 60 | 48 | 88% |
| 95828 | Florin | 50 | 45 | 53 | 76 | 56 | 52% |
| 95815 | Old North Sacramento | 61 | 62 | 52 | 55 | 58 | -10% |
| 95821 | Marconi | 37 | 38 | 52 | 41 | 42 | 11% |
| 95822 | Freeport / Fruitridge | 44 | 42 | 49 | 54 | 47 | 23% |
| 95820 | Tahoe Park | 47 | 41 | 44 | 59 | 48 | 26% |
| 95608 | Carmichael | 33 | 35 | 43 | 31 | 36 | -6% |
| 95758 | Laguna | 18 | 34 | 43 | 43 | 35 | 139% |
| 95610 | Citrus Heights | 24 | 22 | 42 | 60 | 37 | 150% |
| 95842 | Foothill Farms | 33 | 40 | 41 | 45 | 40 | 36% |
| 95660 | North Highlands | 52 | 46 | 40 | 57 | 49 | 10% |
| 95825 | Arden | 34 | 36 | 38 | 36 | 36 | 6% |
| 95824 | Fruitridge / Stockton | 33 | 36 | 36 | 42 | 37 | 27% |
| 95843 | Antelope | 26 | 25 | 36 | 55 | 36 | 112% |
| 95632 | Galt | 28 | 19 | 35 | 35 | 29 | 25% |
| 95841 | Madison | 45 | 15 | 35 | 41 | 34 | -9% |
| 95827 | Rosemont / Lincoln Village | 38 | 44 | 34 | 25 | 35 | -34% |
| 95826 | Rosemont / College Greens | 35 | 34 | 34 | 44 | 37 | 26% |
| 95834 | Natomas | 24 | 27 | 34 | 40 | 31 | 67% |
| 95621 | Citrus Heights | 14 | 23 | 33 | 40 | 28 | 186% |
| 95835 | North Natomas | 13 | 23 | 33 | 39 | 27 | 200% |
| 95628 | Fair Oaks | 20 | 19 | 30 | 14 | 21 | -30% |
| 95624 | Elk Grove | 22 | 24 | 25 | 27 | 25 | 23% |
| 95630 | Folsom | 12 | 15 | 25 | 32 | 21 | 167% |
| 95832 | Meadowview /Hood | 9 | 19 | 22 | 26 | 19 | 189% |
| 95831 | Pocket | 18 | 19 | 20 | 21 | 20 | 17% |
| 95662 | Orangevale | 21 | 16 | 19 | 21 | 19 | 0% |
| 95818 | Land Park | 14 | 22 | 17 | 22 | 19 | 57% |
| 95757 | Laguna South | 16 | 10 | 17 | 18 | 15 | 13% |
| 95829 | Vineyard | 8 | 10 | 16 | 17 | 13 | 113% |
| 95673 | Rio Linda | 5 | 10 | 12 | 24 | 13 | 380% |
| 95814 | Downtown | 5 | 5 | 12 | 9 | 8 | 80% |
| 95817 | Oak Park | 7 | 9 | 10 | 13 | 10 | 86% |
| 95864 | Arden Arcade | 3 | 2 | 6 | 7 | 5 | 133% |
| | Other Zip Codes | 162 | 194 | 191 | 251 | 200 | 55% |
| | Total | 1233 | 1290 | 1506 | 1737 | | |

*Data source – Sacramento County Probation Department – Juvenile Probation Information Program (JPPI)

Table 2 below shows the top five offenses for the 1,721-youth referred to the YDF Intake Unit in 2024.

Table 2

Top Five Offenses for 1,721 Youth in 2024

| Offense | Total |
|---|--------------|
| PC 148(A)(1) Resisting or Obstructing Public/Peace Officer | 206 |
| PC 211 Robbery | 142 |
| PC 496D(A) Receiving Known Stolen Motor Vehicle, Trailer, or Vessel | 122 |
| PC 29610 Possession of a Firearm by Minor | 120 |
| VC 10851(A) Theft and Unlawful Driving or Taking of a Vehicle | 118 |
| TOTAL # Youth involved in above offenses | 708 |

C. Juvenile Justice Action Strategy

The following juvenile justice action strategy provides for a continuum of responses to juvenile crime and demonstrates a collaborative, integrated approach for implementing a system of swift, certain, and graduated responses for at-risk and justice-involved youth.

The Sacramento County Juvenile Justice System continues to place a strong emphasis on the principles of risk-need-responsivity in response to juvenile crime and delinquency. From the first point of entry into the Juvenile Justice System, efforts to divert youth from the system and preserve the family are a priority. A continuum of intermediate sanctions for youth under Probation's supervision mitigates the need for formal court proceedings and is designed to assist youth in redirecting negative behaviors and successfully completing probation. Targeted strategies place emphasis on prevention and early intervention, child and family focus and teaming, a cross-systems approach to programs and service delivery, collaboration, and trauma-informed care.

Youth Detention Facility

Youth taken into temporary custody by a law enforcement officer are received by the Juvenile Intake Unit at YDF. The arresting officer must provide a written statement of probable cause for detention prior to the Intake Unit accepting custody of the minor. If the youth is accepted into custody, an intake officer will review all available information and conduct a risk assessment to guide the custody decision. The intake officer will make one of the following primary dispositions: (a) dismissal at intake with or without conditions or program referrals; (b) diversion to informal probation, pursuant to WIC §654; or (c) referral to the District Attorney for prosecution. As an alternative to incarceration, some youth may be released on home supervision or electronic monitoring, with Global Positioning System (GPS) capabilities, pending their scheduled detention hearing.

The youth in custody at YDF are provided short-term care and secure detention while awaiting appearances in Juvenile Court, serving custody commitments, or pending a transfer to other programs.

Probation works with Public Health and BHS to provide medical, mental health, alcohol, and drug services to youth within the facility. Services include health screenings, comprehensive mental health assessments, psychiatric evaluation and medication monitoring, immunizations, optometry, dental, routine care, specialty care, crisis services, alcohol and drug screenings, education, and supportive services.

The Sacramento County Office of Education (SCOE) provides on-site education for youth within YDF. Instruction at El Centro Junior / Senior High School includes English, Math, Social Studies, Science and Physical Education, as well as Financial and Computer Literacy. Students with Individualized Education Plans (IEPs) receive instruction by special education staff. High School Equivalency Testing (HiSET) is also available for those students ready to take the test.

Youth detained in the YDF are provided with a vast array of programs made possible by the dedication of assigned probation staff, contract employees and over 100 volunteers. Programs are designed to strengthen pro-social skills, build confidence, solve problems, develop appropriate decision-making skills, promote physical activities, and enhance academic performance. These programs encourage youth to work towards rehabilitation and build skills to support their reintegration into the community upon release from custody. Some of the programs available at the YDF are highlighted below:

Trauma Informed Care

Youth identified as having a significant history of trauma receive a Child and Adolescent Trauma Screen and up to 10 sessions of trauma curriculum. All school and probation staff assigned to the designated units are provided with intensive trauma training. Some of the units have been converted to a homelike environment and contain coping boxes which include sensory items, journals, and other items to help calm and regulate youth.

Alternatives to Violence

The Alternatives to Violence (ATV) curriculum is a contracted service provided to youth by Tyrone Weaver. The program links law enforcement, public health, and community organizations to reduce minority youth violence in and out of custody. Workshops draw on the shared experience of participants, using interactive exercises and discussions to examine the ways youth respond to situations where frustration and anger can lead to violence or aggressive behavior. The exercises and discussions help youth manage feelings, anger, and fears so they can build good relationships, approach conflict in a more creative and less reactive manner and deal more effectively with risk and threatening situations.

Anti-Recidivism Coalition (ARC)

The mission of ARC is to change lives and create safe, healthy communities by providing a support and advocacy network for, and comprised of, formerly incarcerated men and women. ARC serves more than 300 formerly incarcerated men & women committed to living a crime, gang, and drug free life. Members are enrolled in school, work or are actively searching, and are of service to their community and the ARC network. To help members transition back into society, ARC provides counseling, case management, mentorship and supportive housing, employment, and education assistance.

Skills, Training and Enrichment Program

The Skills, Training and Enrichment Program (STEP) is a multidisciplinary, skill building youth program encompassing education, mental health, recreational therapy, and physical fitness. The program encourages pro-social behavior among participating residents with the goal of improving their daily social interactions.

Pawsitive Impact

Pawsitive Impact engages youth in providing shelter dog training to rehabilitate and re-socialize abandoned and/or abused dogs and transform them into adoptable pets. Along with teaching youth lessons in accountability, responsibility and consideration, the program encourages youth who have previously been under-engaged to participate in community service opportunities and other prosocial activities in the community upon their release from the YDF.

The Beat Within

The Beat Within provides incarcerated youth with consistent opportunity to share their ideas and life experiences in a safe space that encourages literacy, self-expression, some critical thinking skills, and healthy, supportive relationships with adults and their community.

The Multi-Sensory De-escalation Room

The Multi-Sensory De-escalation Room (MSDR) is a therapeutic space that can be used proactively to develop self-regulation skills or responsively as an area for youth experiencing dysregulated behavior to safely regain control of their behavior and emotions. Through an assessment process, the MSDRs are used to identify triggers and strengths to select sensory activities that may help with internal regulation. The MSDR walls are painted



with visually stimulating murals and stocked with variety of sensory items stimulate gross motor, fine motor, and cognitive skills. The youths' abilities to use resources in this environment to calm their emotions with staff engagement is a critical step in the process of self-regulation. By blending applied brain research, child development and occupational therapy concepts, probation staff connect with and help youth develop cognitive skills and self-control techniques.

Swimming Program

There are a disproportionate number of African American child drowning deaths in the United States. To address this, the YDF partnered with the Young Men's Christian Association (YMCA) to implement a swimming program. The swim program provides an opportunity for exercise and promotes positive social engagement. Through the program, youth build confidence and increase water safety skills, which can prevent minority drownings and water-related accidents. The swim program also promotes positive social engagement.

In 2016, the pool program was expanded to include an American Red Cross lifeguard certification program. Youth certified as lifeguards through the program receive employment development services including internships, application assistance, mock interviews, and connections to employment in the community at the YMCA. Graduates can be employed at community pools upon their release.

Lake Tahoe Community College

Probation partnered with Lake Tahoe Community College to implement programming designed to introduce youth to higher education opportunities and provide them with the ability to earn college credits. Through the program, youth are provided with instruction and support both in the YDF and the community upon their release.

Culinary Arts Program

The Culinary Arts Program is professionally taught by a Sacramento County Office of Education staff, who is certified under the American Culinary Federation. The program is designed for the self-motivated, career oriented, individual who wants to learn the basics in Culinary Arts and to continue with a pre-apprenticeship program through the American Culinary Federation. The students learn about basics of food handling, measuring, tools, nutrition, and the fundamentals of cooking. They also learn about product identification, how to read a recipe, making the kitchen staples, industry norms, vocabulary, catering, nutrition and how to shop/read packaging labels/nutrition at a glance, and food science experiments. After the one-month curriculum, students can continue the course

under the American Culinary Federation pre-apprenticeship program which they will be able to continue upon their release from YDF.

Northern California Construction Training

The Northern California Construction Training (NCCT) program provides participants with the opportunity to develop vocational skills and obtain work experience which enhances their ability to gain and retain employment within the community. Program participants receive classroom and practical instruction on basic components of various areas of construction, including the use of construction terms, tool, and equipment. Instruction is provided on general job safety and first aid practices. Upon release, youth can continue program participation in the community.



Chaplaincy Program

The YDF has a full-time Chaplain. Religious services and spiritual support are available for residents through the Juvenile Justice Chaplaincy Volunteer Program. Through this program, residents can attend worship services, bible studies, and counseling in spiritual matters. They also provide tutors and mentors for residents in the Visiting Center.

Library Program

The YDF Library has over 11,000 books and has expanded into a larger location within the facility. The goal of this program is to promote reading, improve literacy and provide youth with resources to help them prepare for transition back into their communities. The library is designed to create an atmosphere of learning, education, and innovation. The YDF Library also holds various contests for youth to encourage creativity through art and poetry. Examples of this effort include the Book spine – Poetry Contest and work with 916 Ink to support creative writing.

Juvenile Court Division

The Juvenile Court Division conducts comprehensive case investigations and prepares a wide variety of reports including Social Study Reports, Home Evaluation Reports, Deferred Entry of Judgment Suitability Reports, Transfer Hearing Reports, and 241.1 WIC Joint Assessment Reports. The reports are used by the Court, District Attorney, Public Defenders, and conflict criminal defenders during negotiations and to provide the Court with appropriate recommendations for Court dispositions.

Officers represent the Probation Department as presenters in the courtroom and attend all Juvenile Court proceedings. They provide up to date case information and research issues at the Court's request. Presenters also serve as a resource for the youth and their families.

Officers assigned to the Intake/Citations Unit review and assess cases which are referred from arrests and bookings from law enforcement agencies into the Youth Detention Facility. A detention risk assessment is used to determine eligibility for release or to secure detention. Preliminary investigations are conducted on non-detention citations to determine if referrals to the District Attorney or Court are necessary. Citation officers have discretion to divert cases to diversion. Additionally, the officers

work with victims and seek restitution on their behalf, oversee record seals, monitor a 654 WIC Diversion caseload, and conduct military records checks.

Juvenile Field Services

Alternatives to Incarceration: Home Supervision/Electronic Monitoring Program

The Home Supervision/Electronic Monitoring program provides alternatives to incarceration while a youth is pending adjudication of their case. While in the program, youth remain at home in their community where they can attend school, church, counseling, etc. and/or work, if employed. They may also participate in pro-social, extracurricular school activities or programs deemed appropriate by the Probation Officer. The program allows the Court and Probation to use the least restrictive means necessary to ensure the minor's compliance with court orders and expectations encouraging pro-social behavior while in their community.

Prevention Pathways: Prevention and Intervention Services:

Prevention Pathways services are designed to channel youth away from the juvenile justice system and prevent further involvement through individualized services to address risk and needs, resulting in better outcome for youth and families.

Juvenile Justice Prevention Services

The Juvenile Justice Prevention Services (JJPS) program in partnership with Stanford Sierra Youth and Families is a trauma informed approach that consists of short-term intensive services in the form of Functional Family Therapy, and High-Fidelity Wraparound Services. The program has a target population of 13–17-year-olds who have been referred to Probation, but their case has not yet reached resolution. The program further aims to engage families in the 95823, 95828, and 95838, zip codes that are shown to have an over representation of justice involved youth. Services are provided on an in-home basis at no cost to the family with the goal of minimizing youth involvement in the juvenile justice system.

Ending Girls Incarceration (EGI) Initiative

Probation in collaboration with the Office of Youth and Community Restoration and the Vera Institute of Justice took a deep dive into our local data, identifying system, and programming gaps, and are implementing policy and programming solutions to meaningfully reduce the incarceration of girls and gender expansive youth. Identified EGI officers supervise caseloads of pre-adjudicated girls and gender expansive youth, many of whom have been identified being commercially sexually exploited, or in danger of exploitation. These youth participate in gender and culturally responsive diversion services with the goal of reducing and ultimately eliminating girls' incarceration.

Once a justice-involved youth has been adjudicated and placed on probation, sometimes following a period of detention at the YDF, the case is referred to Probation's Juvenile Field Division (Juvenile Field) for assessment, case planning, programming referrals, and supervision.

Roadmap for Success-Candidacy Assessment and Reentry Team:

Candidacy Assessment

The first step in the Juvenile community supervision assignment process is screening and assessment through a structured interview to engage and motivate the youth and the family. Officers meet with youth subject to a WIC §602 petition to determine reasonable candidacy (imminent risk of removal into foster care as defined by CDDSS Title IV-E guidelines) and update their risk-and-needs assessment, in collaboration with the youth's family/legal guardian, to determine their risk to recidivate and to identify strengths and areas of need. The assessment results drive the dynamic and individualized case planning process with an emphasis on criminogenic risk and protective factors. Through this guided process, evidence-based programs within the community are discussed and explored with the youth and family. Referrals to community-based providers are made on-site and connection to service is timely. Supervision and support are provided by case managing officers who further collaborate with service providers, youth, families, and natural supports.

Reentry Development for Youth

The target population for Reentry Development for Youth (R.E.D.Y-GO!) is comprised of youth returning to our community following a period of detention or placement. Best practices recognize that reentry planning and services begin at the time of admission to detention and continue beyond the youth's release and reintegration into the community. This reentry continuum consists of three overlapping phases: 1) in the facility, 2) the transition out of the facility and into the community, and 3) in the community. Sacramento County's reentry process utilizes collaborative teaming to assess strengths and needs, develop transition and case plans, and make connections to services, education, housing, and employment prior to release from custody.

The R.E.D.Y-GO! program provides intentional coordination for community transition and stabilization prior to release through a comprehensive assessment based on strength and needs, the development of an individualized case plan, referrals to community-based services and family engagement. Through a collaborative teaming process with representatives from Probation, BHS, Primary Health, SCOE, service providers and, most importantly, the youth and family, a transition plan is developed. Prior to community reentry, connections to services related to treatment, education, housing, employment/vocational opportunities, and positive youth development are made. The collaborative process and plan implementation continue as case managing officers provide supervision and support within the community.

Community-Based Supervision

The Community-Based Supervision Unit (CBSU) case assignment is based on the youth's geographical location. The CBSU is designed to give officers increased access to youth during the school day, which provides a better opportunity to supervise and support them in the community.

Juvenile Field officers supervise both community and "office" cases, which allows youth to be moved between the two caseload types based upon their assessed needs. This approach increases supervision efficiency, education, and advocacy, and promotes healthy relationships between youth and officers. Through a fluid case planning process that often includes Child and Family Team (CFT) or Multi-disciplinary Team (MDT) meetings, officer's work with youth, families, and community-based providers to ensure service needs are met.

Juvenile Justice Intervention Services

Juvenile Justice Intervention Services (JJIS) is a partnership between Sacramento County Probation and Stanford Sierra Youth and Families. The program assesses each youth's individual treatment needs and matches the youth to the appropriate service intervention(s) to include counseling, skill building, peer, and family support services; and case management and linkage to community-based services.

Youth ages 13-25 can be referred to the JJIS program through the Sacramento County Probation Department, based on eligibility criteria and an assessment administered by Probation.

Services are primarily community-based provided in the home, school, and/or community, based on individual needs of each youth and their family. Consistent with best practices, probation officers work in collaboration with SSYF's JJIS team, youth, families, advocates, educators, and natural supports to ensure the youth and family's needs are being met. The goals of the program are to build upon the youth's individual strengths, increase resiliency, reinforce positive family, and peer connections, promote prosocial behaviors, and improve overall mental health and well-being.

The JJIS programs seeks to achieve the following outcomes:

1. Keep youth and families together,
2. Reduce out of home placements and recidivism,
3. Promote well-being,
4. Support behavior change, and,
5. Target the following behaviors including, but not limited to family circumstances/parenting; peer relations; substance abuse; leisure/recreation activities; personality/behaviors; and attitudes/orientation.

Impact Services Unit

Probation officers in the Impact Services Unit provide enhanced case management services to youth on probation who are experiencing mental health disorders and sexual exploitation. Through collaborative partnerships across systems, higher risk youth and families are supported through a teaming process, MDT and/or CFT meetings, which may occur in a mental health full-service partnership program or through Commercially Sexually Exploited Children (CSEC) specific programming as described in detail below. Youth and families are referred to community-based programs to support their varying needs which may include family-based services, psychiatric services, cognitive based individual or group therapy, trauma related curriculums, youth advocates, life skills and/or educational/vocational training opportunities. Officers in this unit receive specific training to support the complex needs of the youth and their families.

Commercially Sexually Exploited Children:

Since 2014, the California Legislature has invested in the child welfare system's capacity to identify and serve Commercially Sexually Exploited Children (CSEC), while simultaneously shifting away from criminalization. Sacramento County has utilized a multi-layered set of strategies to strengthen the ability of front-line staff and employees to engage, serve and support CSEC and their families. Sacramento County's CSEC Steering Committee, led by the Department of Child, Family and Adult Services (DCFAS), includes representatives from Probation, Juvenile Court, education, law enforcement, the Public Defender, the District Attorney, Public Health, Behavioral Health Services (BHS) and community-based organizations that serve CSEC.

The West Coast Screening Assessment Tool is conducted on every youth booked into the Youth Detention Facility (YDF) to identify youth believed to be CSEC. If necessary, the CSEC Field Unit conducts the assessment for youth in the community. CSEC youth are placed on the caseloads of specially trained probation officers. The officers meet with CSEC youth to discuss their current situation and make recommendations to the Court. Additionally, probation officers participate in MDT meetings with attorneys, County Counsel, Children's Law Center, DCFAS, UC Davis counselors, River Oak Center for

Children, Capital Star, youth advocates and other providers connected to these cases. In 2014, the Juvenile Court dedicated a docket to CSEC youth that includes support from two Juvenile Field officers and one Juvenile Court presenter. In 2015, Probation entered a Memorandum of Understanding to detail the Program Interagency Protocol with the Juvenile Court, DCFAS, BHS, Public Health, the District Attorney, the Sheriff's Department, the Sacramento Police Department, Sacramento City Unified School District, SCOE, Children's Law Center, Children's Receiving Home, UC Davis CAARE Center and Another Choice Another Chance. The Protocol states CSEC must be;

- understood as child abuse and reported as such,
- children should not be criminalized for their sexual exploitation, and,
- responses to CSEC youth should be victim centered, trauma-informed, strength-based, developmentally appropriate, culturally competent, data and outcome driven, and in the best interest of the child.

Officers ensure compliance to Senate Bill (SB) 794 and are highly trained on the topic of human trafficking, victimization and pimping, intervention strategies, harm reduction, trauma informed care, and services specific to CSEC.

Juvenile Justice Diversion and Treatment Program:

The Juvenile Justice Diversion and Treatment Program (JJDTTP) is a Full-Service Partnership (FSP) between Sacramento County Probation and Behavioral Health Services. This program is funded by the Sacramento Department of Health Services, Division of Behavioral Health through the voter approved Proposition 63, Mental Health Services Act (MHSA). The program is a collaboration between BHS, Probation and River Oak Center for Children and was established to deliver integrated services to a population of youth involved with juvenile justice that have multiple complex needs across multiple service areas. Presently, there is capacity for up to 131 youth, with 39 of these spaces reserved for diversion. Diversion youth may be justice system involved but are not yet adjudicated. Diversion youth may also be displaying behaviors related to their mental health that put them at risk for justice system involvement. To be eligible, youth must meet serious emotional disturbance criteria and be between the ages of 13-18 at the time of enrollment. Through the JJDTTP, eligible youth and their families are provided with mental health screenings, assessments, intensive mental health services, which could include psychiatric services and FSP supports. Skills trainers, family and youth advocates complement clinical services. Eligible youth referred to the program are provided the opportunity to voluntarily receive intensive, evidence-based services delivered in coordination with a specialized probation officer. Youth referred to the program can voluntarily participate as long as clinically necessary up to their 26th birthday. Program outcomes for youth include reduced psychiatric hospitalization, increased engagement in educational programs as well as reduced arrests and incarcerations.

JJDTTP seeks to achieve the following five goals:

1. Stabilize housing placements and reduce homelessness.
2. Increase school attendance and achievement.
3. Increase vocational training and employment.
4. Reduce psychiatric hospitalizations; and
5. Reduce juvenile detention and/or young adult incarceration.

Transitional Age Youth

Transitional Age Youth (TAY) is a specialized field unit providing case management services and support to young people ages 18-21 under the jurisdiction of the Juvenile Court. The target population includes young adults who are not currently enrolled in High School or have already obtained their diploma. These young adults receive a Level of Service/Case Management Inventory (LS/CMI) assessment and case planning that includes referrals to services to meet identified needs. Referrals are focused on specialized treatment, education, vocational training, and other supports as needed, such as food and emergency housing. The goal of the TAY is to provide clients with assessment, treatment, supervision, and support necessary to promote rehabilitation and to prevent re-offending, resulting in a safer community.

Juvenile Sex Offender and Arson Unit

Youth who have committed sexual or arson offenses are placed on a dedicated caseload. These cases are managed by the Juvenile Sex Offender and Arson (JSO) Unit. Officers in the JSO Unit must work collaboratively with the youth, parents/guardians, and specialized clinicians to ensure compliance with, and completion of, probation conditions.

Most JSO and arson youth are ordered to participate in extensive outpatient services that are tailored for the youths' individual needs. The treatment is consistent with best practices and adheres to guidelines established by the California Sex Offender Management Board. An individualized treatment plan will identify appropriate responses to risks/needs and establish relapse prevention strategies. The final goals of treatment are to promote prosocial development and reduce the likelihood of sexual and general recidivism.

Juvenile sexual-offender treatment may take as long as 12-18 months of weekly sessions to complete. Treatment also includes regular meetings with the Case Management Team. The Case Management Team includes the youth, parent, and family support, treating clinicians, and the JSO Officer. Officers will continue to monitor clients after treatment graduation to ensure the youth are implementing the skills learned in the program.

VOYA Re-Entry

SB 823 shifted the responsibilities of long-term custody for juveniles from the State Division of Justice (DJJ) to local secure youth treatment facilities. Sacramento County's response to this mandate was the creation of the Valley Oak Youth Academy (VOYA), which is housed inside of YDF.

VOYA Re-Entry Officers are introduced to the youth upon commitment and remain an integral part of their VOYA Multi-Disciplinary Team (MDT) until the youth is discharged from the program. Re-Entry Officers conduct monthly visits with the youth and participate in all Progress Review meetings so they may guide the youth's development of a thorough re-entry plan. Once a youth reaches their final few months of commitment time, the Re-Entry Officer will ensure the various components of that re-entry plan are finalized and ready to come together upon release.

The VOYA Re-Entry Officer serves as the youth's field supervision officer once they return to the community. This continuous involvement ensures the officers are deeply familiar with the youth, their family or personal support, community support, and the objectives of each youth's re-entry plan. The officers monitor these high-risk youth for compliance with probation conditions and advise the Court on the youth's adjustment. VOYA Re-Entry Officers assist youth with referrals for housing, employment, education/vocation opportunities, counseling, mentorship, and more.

Welfare and Institutions Code 875(f)(1) states that “Upon a motion from the probation department or the ward, the court may order that the ward be transferred from a secure youth treatment facility to less restrictive program, such as a halfway house, a camp or ranch, or a community residential or nonresidential service program.” Probation has entered into partnership with multiple organizations to facilitate less restrictive programs within the community with a focus on educational programs, vocational training, and counseling services.

Youth Community Outreach Unit (YCOU)

YCOU provides youth under the Juvenile Court jurisdiction who are committed to VOYA to participate in a step-down model as a graduated step towards community reintegration. YCOU projects benefit the youth and community by fostering responsibility, accountability, self-esteem, and work related skills, while also providing an alternative to incarceration.

Black Child Legacy Campaign (BCLC) - Joint County/Community Collaboration

In the spring of 2011, the Sacramento County Board of Supervisors received a 20-year report on Sacramento deaths for the period 1990-2009. The report included a consistent finding that African American children in Sacramento County died at disproportionately higher rates when compared to children of other races. In the fall of 2015, a strategic plan to reduce preventable African American child deaths related to prenatal conditions, sudden infant death, abuse and neglect and third-party homicide was presented by the Black Child Legacy Campaign (BCLC) Steering Committee and approved by the Board of Supervisors.

The BCLC Steering Committee’s subsequent implementation plan identified six core objectives, based on the principles outlined in the strategic plan.

1. Engage youth and a select group of community institutions in priority neighborhoods and establish them as an inter-neighborhood network to reduce African American child deaths.
2. Design a community/grass roots messaging and marketing campaign and deploy it through a saturation strategy in the focus neighborhoods.
3. Increase the level of investment in high-quality and evidenced-based programs and services for children, youth, and families in the focus neighborhoods.
4. Improve access to services through the co-location of multidisciplinary social services teams to include probation in the seven focus neighborhoods.
5. Align County policy discussions and practice changes with identified neighborhood network priorities.
6. Monitor the quality of implementation, evaluate effectiveness, and report on progress toward the goal of reducing African American child deaths and promoting children’s well-being.

In keeping with the BCLC Steering Committee’s plan, seven co-locations for multidisciplinary teams have been identified throughout the County in the following neighborhoods:

- Valley Hi.
- Meadowview.
- Fruitridge/Stockton Blvd.
- Oak Park.
- Arden-Arcade.
- North Sacramento/Del Paso Heights; and

- North Highlands/Foothill Farms.

County human services specialists, social workers and probation officers work collaboratively, through a trauma-informed lens, on-site with the community providers. The teams are responsible for connecting with youth through:

- Weekly case staff meetings.
- Monthly multidisciplinary team meetings.
- Forming partnerships with community providers and the local community team.
- Linking with families.
- Linking families to services.
- Family team meetings as needed; and
- Data collection.

Placement Services

Family maintenance and stability are the primary goals of rehabilitation. However, there are circumstances wherein the Juvenile Court orders removal of youth and entry into a Foster Care setting. This setting may include a resource family or a short term residential therapeutic program (STRTP) within the State of California, in which youth are supervised by Probation Officers.

The children's services Continuum of Care Reform (CCR) efforts launched by the State in 2012 produced recommendations aimed at improving outcomes for youth removed from their homes and placed in congregate or foster care. In 2015, Assembly Bill (AB) 403 was approved by the Governor to further CCR efforts. Under the new law, group homes were restructured to comply with new licensure requirements to provide short-term specialized and intensive treatment and will only be used for children whose needs cannot be safely met initially in a family setting. Services are designed to transition youth back home or to another permanent family as soon as possible. All placement decisions utilize the Child and Family Teaming process and are focused on the least restrictive, most family-like options.

The California Department of Social Services (CDSS) continues to introduce new standards to counties as information surrounding AB 403 evolves. Probation, in collaboration with juvenile system partners, continues to employ changes brought about by AB 403 as new information and standards are released.

Consistent with the objectives of CCR and subsequent legislation the Family First Prevention Services Act (FFPSA) was signed into law as part of the Bipartisan Budget Act of 2018, Public Law (P.L.) 115-123 on February 9, 2018. FFPSA supports the use of evidence-based practices to promote the well-being of children, youth, and families and to prevent unnecessary foster care placements. FFPSA revised many sections of Title IV-B and IV-E of the Social Security Act, including federal payments for foster care and adoption assistance.

FFPSA Part IV was implemented on October 1, 2021, and seeks to enhance support services for families to help children remain at home and reduce the use of unnecessary congregate care placements by increasing options for prevention services, increased court oversight and aftercare requirements for placements, and heightens the requirements for congregate care placement settings.

Current placement options and aftercare services are summarized below:

In-State Placement

In-State Placement focuses on placing youth in appropriate Short-Term Residential Therapeutic Program (STRTP) located within the State of California.

Resource Families

Resource Family Approval (RFA) unifies the process of caregiver approval for children & youth in foster care. Probation utilizes Resource families to provide care for foster youth in a homelike setting either as an initial placement or after the youth completes treatment at an STRTP.

Short Term Residential Therapeutic Program (STRTP) Audits

In July 2011, Placement implemented a progressive group home auditing program. As the CDSS Community Care Licensing only requires STRTP audits within the State of California every five years. Probation developed audit standards to protect youth and insulate the department from liability. Placement officers audit STRTPs annually using high standards to ensure youth are safe and living in environments that provide therapeutic, academic, and recreational services consistent with case plans and the structure and supervision levels are appropriate. This model is also used to review new programs seeking to receive referrals from Probation and investigate when an allegation against the STRTP is made or when incidents involving any resident occur.

Extended Foster Care (AB 12)

Foster care provides resources for non-minor dependents (450 WI) or Extended Foster Care (AB12) youth who would normally exit placement without any assistance, services or reunification with parents or legal guardians. The goal of AB 12 is to ensure this population leaves foster care with the practical skills to achieve their potential and succeed in life. The initiative focuses on providing a safety net of financial assistance, services, and ongoing support to these young adults as they age out of foster care. Officers are assigned to manage the unique challenges of this population by providing case management and supervision to these young adults as they transition to adulthood.

Wraparound

Placement youth who are returning home from out of home care receive Wraparound to ensure a seamless transition back into the community and their home. Wraparound utilizes a family-centered, strengths-based, needs-driven, team driven approach with individualized interventions which are frequently delivered in the family home. Youth and families are provided with Wraparound aftercare services targeted toward their individual needs to have the most effective impact for a successful re-entry into the home.

D. Comprehensive Plan Revisions

This year's comprehensive plan has not incurred any changes but rather continued to expand services for our Valley Oak Youth Academy, the secure track youth program. Through a best practice approach, Probation continues to use a risk-needs assessment to drive individualized case planning. A vast array of evidence-based services as detailed in this plan are provided to the highest-risk, highest-need population.

The plan continues to allow for cross systems collaboration, family inclusion, targeted treatment interventions and extensive re-entry options for youth returning from Placement and youth released from locked facilities.

PART II – Juvenile Justice Crime Prevention Act (JJCPA)

The Juvenile Justice Crime Prevention Act (JJCPA) was implemented via Assembly Bill (AB) 1913, The Schiff-Cardenas Crime Prevention Action of 2000, and codified by Government Code §30061. The purpose of AB 1913 is to provide California counties with funding to implement programs for at-risk youth with the goal of early intervention and to support the implementation of programs and approaches demonstrated to be effective in reducing juvenile crime.

This law established a Supplemental Law Enforcement Services Account (SLESA) in each county to receive allocations. Fifty percent of the moneys received into the SLESA are to be used to implement a comprehensive multiagency juvenile justice plan developed by the local juvenile justice coordinating council (JJCC) in each county. Members of the JJCC, as described in §749.22 of the Welfare and Institutions Code (WIC), are required to develop and implement a continuum of county-based responses to juvenile crime.

The JJCC for each county must include the chief probation officer, as chair, and representatives from the following entities:

- District attorney's office;
- Public defender's office;
- Sheriff's department;
- Board of supervisors;
- Social services department;
- Mental health department;
- Community-based drug and alcohol program;
- City police department;
- County office of education or a school district;
- At-large community representative; and
- Nonprofit community-based organization providing services to minors.

The plan must identify the resources and strategies for providing an effective continuum of responses for the prevention, intervention, supervision, treatment, and incarceration of male and female justice-involved youth. The plan must include strategies to develop and implement locally based or regionally based out-of-home placement options for youth described in WIC §602.

Youth described in WIC §602 are as follows:

“Except as provided in Section 707, any minor between 12 years of age and 17 years of age, inclusive, when he or she violates any law of this state or of the United States or any ordinance of any city or county of this state defining crime other than an ordinance establishing a curfew based solely on age, is within the jurisdiction of the juvenile court, which may adjudge such person to be a ward of the court.”

To qualify for the funding on a non-competitive basis, each county's comprehensive multi-agency juvenile justice plan must include the following components:

- Assessment of existing law enforcement, probation, education, mental health, physical health, social services, drug and alcohol, and youth services resources that specifically

address the needs of at-risk youth, justice-involved youth, and their families.

- An identification and prioritization of the neighborhoods, schools, and other areas in the community that face a significant public safety risk from juvenile crime, such as gang activity, daylight burglary, late-night robbery, vandalism, truancy, controlled substances sales, firearm-related violence, and juvenile substance abuse and alcohol use within the council's jurisdiction.
- A local juvenile justice action strategy that provides for a continuum of responses to juvenile crime and demonstrates a collaborative, integrated approach for implementing a system of swift, certain, and graduated responses for at-risk and justice-involved youth.
- A description of the programs, strategies or system enhancements that are proposed to be funded.

Assembly Bill 1998

Assembly Bill 1998 was enacted in September of 2016 to consolidate the JJCPA and YOBG submissions and streamline reporting requirements.

The juvenile justice combined plan must be developed by the local juvenile justice coordinating council in each county with the membership described in WIC §749.22. The plan shall be reviewed and updated annually and no longer requires Board of Supervisors approval. The plan or updated plan must be submitted to the Board of State and Community Corrections (BSCC) by May 1 of each year in a format specified by the BSCC that consolidates the form of submission of the annual comprehensive juvenile justice multiagency plan with the form for submission of the annual Youthful Offender Block Grant plan.

A. Information Sharing and Data Collection

To better serve youth and families within our communities, county agencies have established methods of cross-systems data sharing. Multiagency disciplinary teams are formed with system partners to coordinate case planning for youth associated with specific populations/programs. Recognizing limitations to data sharing, relevant data is produced to inform best practices. The applications below indicate the data that is captured, and the method used to report the information.

Probation's primary case management system is the Person Information Program (PIP). PIP is a dynamic web-based application available to Probation staff. The PIP application empowers the user with flexible search and case management features. Information regarding warrants, booking, arrest history, restitution/fee balances, addresses, and approved family visitors is available to Probation staff in real time. Multiple PIP reports have been developed to produce specific data for reporting purposes.

Within PIP, the Juvenile Arrest Referral System (JARS) contains information related to risk and needs assessments, detention risk assessments, juvenile referrals, and supervision levels.

Probation utilizes the dynamic LS/CMI and YLS/CMI risk and needs assessment tools. These tools allow Probation to measure changes in risk over time and can be used to evaluate the impact specific programing has on a youth's risk factors.

For some programs, data to track and evaluate outcomes will be pulled from the YLS/CMI 2.0 risk and needs assessment tool reports, in addition to Probation records and databases, such as the PIP, Juvenile Referral and Arrest System (JARS), Booking, Intake and Classification System (BICS) and Child Welfare Services/Case Management System (CWS/CMS).

In 2019, Probation created a departmental dashboard utilizing Microsoft Power BI. The dashboard allows management the ability to look at real-time data to make departmental decisions. The dashboard is interactive and allows the user to apply filters to retrieve division specific information at any time. This data is in turn available to be exported and disseminated, on a right-to-know, need-to-know basis, to stakeholders and partners. The juvenile division dashboards specifically have been delayed due to turnover of Power BI staff as well as current limitations with legislation surrounding record sealing and the inability to look at historical data to utilize as comparison. A goal is to have the dashboards and datasets created in concert with program implementation, so real time data and outcomes are utilized during grant reporting. This allows real-time review of the effectiveness of resources.

B. Juvenile Justice Coordinating Council

Sacramento County Juvenile Justice Coordinating Council

| | |
|---|------------------|
| Interim Chief Probation Officer, Chair | Julie Wherry |
| District Attorney's Office | John Grimes |
| Sheriff's Office | Lena Montoya |
| Board of Supervisors | Keaton Riley |
| Department of Social Services | Melissa Lloyd |
| Department of Health Services, Behavioral Health Division | Ryan Quist |
| Community-Based /Drug and Alcohol Program | Jonathan Porteus |
| City Police Department | Leah Antonetti |
| County Office of Education | Jacqueline White |
| Public Defender's Office | Reuben Moreno |
| Alternates/Designees | |
| Probation (Chair designee) | Marc Marquez |
| District Attorney's Office Designee | Michelle Becker |
| Public Defender's Office Designee | Ashley Burg |
| Board of Supervisors Designee | Xochitl Gomez |
| Department of Social Services Designee | Lisa Clark |
| Department of Health Services, Behavioral Health Division Designee | Sheri Green |
| City Police Department Designee | Sabrina Briggs |
| County Office of Education Designee | Wesley Marshall |

C. Funded Programs, Strategies and/or System Enhancements

During the fiscal year 2025-26, the County will maintain its support for various programs including the Roadmap for Success – Candidacy Assessment and Reentry Team, Community Based Supervision, and the Impact Services Unit. Additionally, it will uphold the contracts for Juvenile Justice Services Interventions resulting from the RFP aimed at providing a range of community-based intervention services for youth and their families. JJCPA funding will also be employed alongside YOBG to back the Juvenile Sex Offender and Arson unit, community-based organizations, and administrative functions. Probation will persist in its efforts to enhance structured case management skills among probation officers, focusing on preserving familial unity through trauma-informed practices, child, and family teaming, and adhering to best practices outlined in Section C, of the Juvenile Justice Action Strategy, Juvenile Field Services, commencing on page 16 of this plan.

PART III – Youthful Offender Block Grant (YOBG)

The Youthful Offender Block Grant (YOBG) was enacted in 2007 by Senate Bill 81. The purpose of the YOBG is to realign the supervision of non-violent, non-sexual and non-serious justice-involved youth from the State of California Division of Juvenile Justice (DJJ) to local governments and to provide local governments with funding support for the supervision of this population. The realignment of youth from state facilities to local supervision in their counties of residence allows their connection to community and family support systems to remain intact and undisturbed.

Since inception, an allocation has been provided each year to enhance the capacity of local communities to implement an effective continuum of responses to juvenile crime. The allocation is calculated based on a formula that gives equal weight to a county's juvenile population and the number of juvenile felony dispositions. The funds can be used to enhance the capacity of county probation, mental health, drug and alcohol, and other services providing supervision and rehabilitation for youth no longer eligible to be committed to the DJJ.

As specified in WIC §1961, each County must submit a juvenile justice development plan to describe the proposed programs, strategies, and system enhancements for the next fiscal year. The plan shall include:

- A description of the programs, placements, services, strategies, and system enhancements to be funded by the block grant allocation.
- A description of how the plan relates to or supports the county's overall strategy for dealing with justice-involved youth who have not committed an offense described in WIC §707(b).
- A description of any regional agreements or arrangements to be supported by the block grant allocation pursuant to this chapter.
- A description of how the programs, placements, services, or strategies identified in the plan coordinate with multiagency juvenile justice plans and programs.

A. Strategy for Non-707(b) Offenders

Probation's strategy for dealing with non-707(b) offenders does not differ from its strategy for other justice-involved youth. The use of best practices by the department and community providers assists in addressing Probation's immediate and long-term goals. These include providing appropriate types and levels of programming and services to the County's justice-involved youth.

To assist in offsetting commitment trends within the Secure Youth Treatment Facility, also known as the Valley Oak Youth Academy, we provide community and office supervision and electronic monitoring for at home pre-adjudicated youth. Supervised youth are provided with a broad range of treatment and services to meet individual needs. Staff are trained in evidence-based practices and provide supervision based on a validated risk-needs assessment along with a comprehensive case plan that is updated every six months or as needed to address a significant event ensuring the youth is receiving appropriate services for family stabilization.

Probation continues to work towards building capacity to provide community supervision and serve the non-707(b) /PC 290.008 population in the following areas: 1) transitional living opportunities; 2) educational assistance and/or vocational training; 3) employment placement; 4) family support; 5) parenting skills; 6) mental health services; and 7) substance abuse treatment.

B. Regional Agreements

Currently there are no regional agreements.

C. Funded Programs, Placements, Services, Strategies and/or System Enhancements

Currently, YOBG funding is used in coordination with JJCPA to fund several programs within the Juvenile Field Division. Through these two funding streams, the department can implement programs and strategies to rehabilitate justice-involved youth, as referenced in Section C. Juvenile Justice Action Strategy, Juvenile Field Services, page 16 of this plan. The programs allow officers to provide specialized supervision services to youth to mitigate further involvement with the juvenile justice system.

The plan for Fiscal Year 2025-2026 will be for Probation to continue to utilize the YOBG funding to support Juvenile Field Supervision units including Transitional Aged Youth, Community-Based Supervision, Juvenile Sex Offender and Arson, DJJ/VOYA Reentry, as well as a contract with a community-based provider for juvenile sex offender treatment services. In addition, Probation will utilize YOBG funding to support staffing, supplies, and pro-social programming for general population youthful offenders at the Youth Detention Facility.